

model
PHCPGL

Conical Parking Garage Luminaire

Application

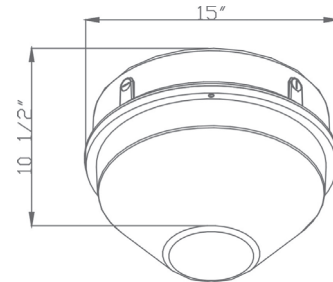
The PHCPGL round parking garage luminaire is perfect for applications with ceiling heights of 15 feet and below. It provides a wide, even, symmetrical light distribution for parking garages, maintenance areas, industrial areas, corridors and storage areas.

Features

- Rugged die-cast aluminium housing with polyester powder coated finish provides excellent heat dissipation and helps extend component life
- Die formed, heavy gauge reflector with high reflectance white polyester powder coated finish helps provide a smooth, even IES Type V symmetrical beam pattern
- UL 1598 listed for wet locations
- Four 1/2 coin plugs in each quadrant for easy conduit access
- Standard color is bronze. Contact factory for finishes.



Dimensions



ORDERING INFORMATION:

Example: **(PHCPGL-80-41-120-BZ)**

