

**2 Lamp T8, U6"  
9 or 16 Cell**

**APPLICATION**

- Low-brightness troffer for most ceilings:
  - Grid inverted T (NEMA “G”)
  - Flange-type for concealed mechanical suspension (NEMA “F”)
  - Modular and “Z” spline (NEMA “M/Z”)
- Select one of the four air handling functions:
  - Static; non-air handling.
  - Heat transfer; air return through lamp compartment.
  - Air supply; (or air return) through side slots.
  - Combination; both heat transfer and air supply features listed above.
- Air boots by others.
- Air handling or combination models are available with optional factory installed snap-in air slot covers (ASC) or adjustable air pattern control blades (APC).
- Excellent visual comfort and inconspicuous appearance.

**CONSTRUCTION/FINISH**

- Housing is multi-stage phosphate treated for maximum corrosion resistance and finish coat is high reflectance baked white enamel.
- Flat black finish inside perimeter reveal for “floating door” appearance.
- Supplied with one wireway cover (except when required by ballast configuration.) Two ballast covers (2WC) are available.
- Models utilizing 3 ballasts (including emergency ballast) will be supplied with a top mounted ballast box, which will increase the height of the luminaire.
- Standard wireway cover is designed to accommodate small can electronic ballasts. Specification of ballasts other than generic ballasts, specification of emergency ballast, or field installation of emergency ballast may require the use of a larger wireway cover. Deep wireway cover (DWC) accommodates 2-3/8" W x 1-1/2" H ballasts and may be specified when ordering.

- Factory installed access plate includes 7/8" hole, 7/8" knockout and grounding screw.
- T-bar grid clips (UL listed, patented) built into fixture, no extra parts required. Designed for use with standard grid ceiling members, 1-1/2" maximum height.
- One-piece housing features integral end plates that increase rigidity and minimize damage from handling or shipping.

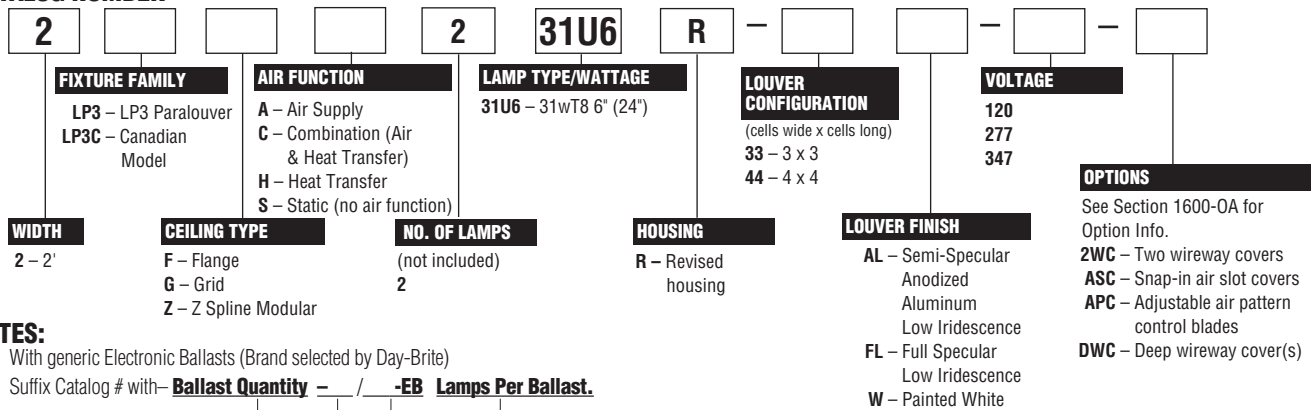
**ELECTRICAL**

- Class P, HPF ballasts comply with ©Federal Ballast Law (Public Law 100-357,1988).
- UL listed for damp locations. Canadian certified optional.
- Self-contained fluorescent emergency power packs can be incorporated, UL listed for dry locations. Bodine or Day-Brite LP series emergency ballasts are recommended for use with the standard wireway cover. DEB series emergency ballasts may be used with the larger wireway cover.

**ENCLOSURES**

- Parabolic-shaped louvers closely controlled for uniform low-brightness appearance, and interlocked to avoid vibration.
- Choice of semi-specular low iridescence anodized aluminum (AL), specular (FL), or white louver finishes.
- 9 Cell: Lengthwise shielding is 21°. Crosswise shielding is 21°.
- 16 Cell: Lengthwise shielding is 27°. Crosswise shielding is 27°.
- Bottom aluminum flange has mitered corners and fits flush with ceiling.
- Can be hinged and latched from either side.
- Shipped with plastic film to keep out construction dirt.
- T-hinges are standard for positive support of the enclosure.
- Guide-post spring loaded latches are standard for ease of use and secure retention of the louver.

**CATALOG NUMBER**



**NOTES:**

- With generic Electronic Ballasts (Brand selected by Day-Brite)  
Suffix Catalog # with- **Ballast Quantity** - / - **EB Lamps Per Ballast**.

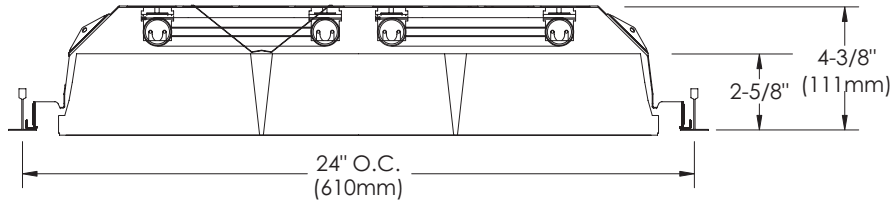
**Example: -1/2-EB** = One 2 Lamp Electronic Ballast.

**JOB INFORMATION**

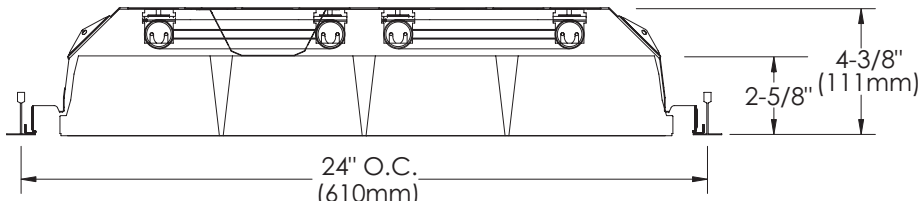
**247.2-PLV**

# 2' x 2' LP3 PARALOUVER

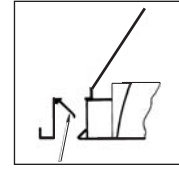
## DIMENSIONS



STANDARD WIREWAY COVER SHOWN

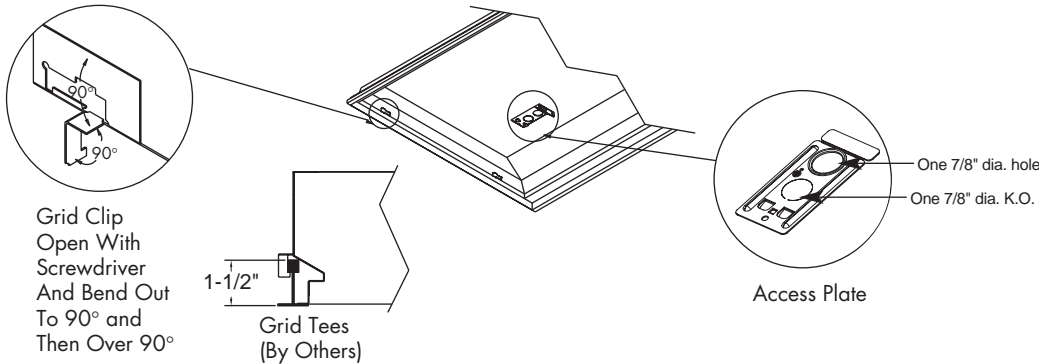


DEEP WIREWAY COVER SHOWN



Optional Air Pattern Control (APC)  
(on Air and Combination Units)

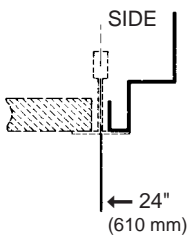
- Fully adjustable
  - Closed= Static
  - 45°= Horizontal Air Supply
  - 90°= (fully open) – Vertical Air Supply
- Side Slots may also be used for Return Air to Plenum
- Snap-in air slot covers (ASC) also available.



**2** **LP3** **G** **S** **2** **31U6** **R**

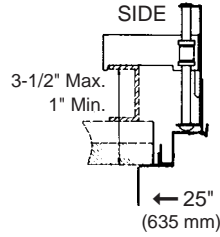
### CEILING TYPE

**G = GRID (NEMA G)**



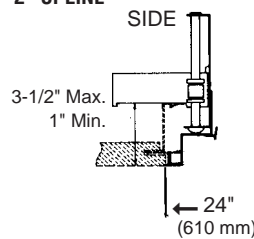
(NEMA Type G)  
Lay-in acoustical ceilings using exposed grid suspension, with tees for fixtures on 24" x 24" spacing.

**F = FLANGE (NEMA F)**



(NEMA Type F)  
Flange for acoustical ceilings using concealed mechanical suspension. Swing-jack mounting brackets: adjustment 3-1/2" max. and 1" min. Refer to sheet 801-CL for cut-out information.

**Z = (NEMA M/Z) MODULAR AND "Z" SPLINE**



(NEMA M/Z)  
Modular and "Z" Spline using concealed mechanical suspension. Swing-jack mounting brackets: adjustment 3-1/2" max. and 1" min.

**FOR PHOTOMETRIC TESTS ON WHITE LOUVERS ASK FOR TEST #'S:**

**9 CELL – 22797**  
**16 CELL – 22794**

**PHOTOMETRIC TESTS ARE ALSO AVAILABLE ON-LINE @[www.daybritelighting.com](http://www.daybritelighting.com)**

The photometric results were obtained in the Day-Brite Lighting Laboratory which is NVLAP accredited by the National Institute of Standards and Technology.

**PHOTOMETRIC DATA**

CATALOG # 2LP3GS231U6R-33FL-1/2-EB LAMPS = FBO32T8/6 INPUT WATTS = 57  
 TEST #22796 S/MH= 1.5 BALLAST = ELECTRONIC BALLAST FACTOR = .88

LER = FP-63

COMPARATIVE YEARLY LIGHTING ENERGY COST PER 1000 LUMENS = **\$3.81** BASED ON 3000 HRS. AND \$.08 PER KWH.

FIXTURE EFFICIENCY= 72.5%

CANDLEPOWER				
Angle	End	45	Cross	
0	1552	1552	1552	
5	1539	1549	1557	
10	1510	1540	1568	
15	1466	1528	1599	
20	1413	1520	1640	
25	1346	1517	1652	
30	1277	1488	1676	
35	1196	1458	1635	
40	1100	1413	1524	
45	995	1302	1368	
50	880	1127	1187	
55	752	869	771	
60	603	524	257	
65	274	179	102	
70	17	29	6	
75	5	5	5	
80	2	2	3	
85	3	3	2	

MAINTAINED ILLUMINATION TABLE- Square Feet/Fixture*						
■ 80-50-20 Reflectances (Ceiling-Wall-Floor) ■ LLF = 0.74 2800 Lumens/Lamp very clean ■ Room width divided by room height = 5 or more, 2 or 1						
Fixture Size & # of Lamps	Room Width Room Height =	Approx. Area (sq. ft.) per Fixture				
		10 ft-c	30 ft-c	50 ft-c	70 ft-c	100 ft-c
2 Lamp 31U6	5	-	108	65	46	32
	2	-	77	46	33	-
	1	-	57	34	-	-

\*Observe Fixture S/MH Requirements for Specific Applications

AVERAGE LUMINANCE CD/SQ.M WITH 2800 LUMEN LAMPS				
ANGLE	END	45°	CROSS	
45	4946	6472	6800	
55	4608	5325	4725	
65	2279	1489	848	
75	68	68	68	
85	121	121	81	

TYPICAL V.C.P.'s					
Room Size	Mounting Height		Crosswise		
	Lengthwise	8.5	10	8.5	10
30x30	84	76	87	79	
40x40	89	83	92	86	
60x30	89	83	92	86	
60x60	92	88	94	90	
100x100	94	92	97	94	

LLF = .74 LLF = LIGHT LOSS FACTOR LLF = LDD X LLD X BF LDD = VERY CLEAN 0.94 CLEAN 0.90  
 LLD = 0.90 @ 40% RATED LAMP LIFE BF = .88 ELECTRONIC BALLAST & T8 LAMP (RELAMP AT 70% LAMP LIFE)

COEFFICIENT OF UTILIZATION											
pfc	pcc	pw	20			70			50		
			70	50	30	70	50	30	50	30	
RCR	0	85	85	85	83	83	83	81	81	81	
	1	81	78	76	79	76	73	72	71	71	
	2	75	69	65	72	68	65	66	63	63	
	3	68	61	56	67	60	56	58	55	55	
	4	63	55	50	61	55	48	53	47	47	
	5	57	50	44	56	48	44	47	42	42	
	6	54	45	39	53	44	39	42	38	38	
	7	50	40	34	48	40	34	39	34	34	
	8	46	36	30	45	36	30	35	30	30	
	9	42	34	28	41	34	28	33	28	28	
	10	40	30	26	40	30	26	29	25	25	

LIGHT DISTRIBUTION				
DEGREES	LUMENS	% LAMP	% FIXTURE	
0-30	1277	22.8	31.4	
0-40	2174	38.8	53.5	
0-60	3850	68.7	94.8	
0-90	4062	72.5	100.0	

**PHOTOMETRIC DATA**

CATALOG # 2LP3GS231U6R-33AL-1/2EB LAMPS = FBO32T8/6 INPUT WATTS = 57  
 TEST #22795 S/MH= 1.5 BALLAST = ELECTRONIC BALLAST FACTOR = .88

LER = FP-59

COMPARATIVE YEARLY LIGHTING ENERGY COST PER 1000 LUMENS = **\$4.07** BASED ON 3000 HRS. AND \$.08 PER KWH.

FIXTURE EFFICIENCY= 68.4%

CANDLEPOWER				
Angle	End	45	Cross	
0	1517	1517	1517	
5	1505	1515	1524	
10	1475	1506	1535	
15	1430	1491	1550	
20	1376	1468	1569	
25	1315	1440	1561	
30	1245	1396	1548	
35	1167	1333	1497	
40	1074	1249	1402	
45	969	1128	1253	
50	848	960	1027	
55	708	736	704	
60	523	465	363	
65	288	221	168	
70	82	74	59	
75	36	26	26	
80	16	12	11	
85	5	5	3	

MAINTAINED ILLUMINATION TABLE- Square Feet/Fixture*						
■ 80-50-20 Reflectances (Ceiling-Wall-Floor) ■ LLF = 0.74 2800 Lumens/Lamp very clean ■ Room width divided by room height = 5 or more, 2 or 1						
Fixture Size & # of Lamps	Room Width Room Height =	Approx. Area (sq. ft.) per Fixture				
		10 ft-c	30 ft-c	50 ft-c	70 ft-c	100 ft-c
2 Lamp 31U6	5	-	102	61	44	31
	2	-	72	43	31	-
	1	-	53	32	-	-

\*Observe Fixture S/MH Requirements for Specific Applications

AVERAGE LUMINANCE CD/SQ.M WITH 2800 LUMEN LAMPS				
ANGLE	END	45°	CROSS	
45	4817	5607	6228	
55	4338	4510	4314	
65	2395	1838	1397	
75	489	353	353	
85	202	202	121	

TYPICAL V.C.P.'s					
Room Size	Mounting Height		Crosswise		
	Lengthwise	8.5	10	8.5	10
30x30	77	71	79	74	
40x40	81	77	84	79	
60x30	83	78	85	80	
60x60	84	80	86	82	
100x100	88	85	90	87	

LLF = .74 LLF = LIGHT LOSS FACTOR LLF = LDD X LLD X BF LDD = VERY CLEAN 0.94 CLEAN 0.90  
 LLD = 0.90 @ 40% RATED LAMP LIFE BF = .88 ELECTRONIC BALLAST & T8 LAMP (RELAMP AT 70% LAMP LIFE)

COEFFICIENT OF UTILIZATION											
pfc	pcc	pw	20			70			50		
			70	50	30	70	50	30	50	30	
RCR	0	81	81	81	80	80	80	76	76	76	
	1	76	72	70	73	71	69	68	67	67	
	2	69	65	60	68	64	60	61	58	58	
	3	65	57	53	63	56	53	55	51	51	
	4	58	52	46	57	51	46	50	45	45	
	5	55	46	40	53	46	40	45	40	40	
	6	51	41	36	48	41	35	40	35	35	
	7	46	38	33	46	38	33	36	32	32	
	8	44	34	29	42	34	28	34	28	28	
	9	40	32	27	40	32	27	30	26	26	
	10	38	29	25	36	28	23	28	23	23	

LIGHT DISTRIBUTION				
DEGREES	LUMENS	% LAMP	% FIXTURE	
0-30	1231	22.0	32.1	
0-40	2062	36.8	53.8	
0-60	3556	63.5	92.8	
0-90	3830	68.4	100.0	

# 2' x 2' 16 CELL LP3 PARALOUVER



## PHOTOMETRIC DATA

CATALOG # 2LP3GS231U6R-44FL-1/2-EB  
TEST #22793 S/MH= 1.4

LAMPS = FB032T8/6  
BALLAST = ELECTRONIC

INPUT WATTS = 57  
BALLAST FACTOR = .88

LER = FP-57

COMPARATIVE YEARLY LIGHTING ENERGY COST PER 1000 LUMENS = \$4.21 BASED ON 3000 HRS. AND \$.08 PER KWH.

FIXTURE EFFICIENCY= 66.2%

CANDLEPOWER			
Angle	End	45	Cross
0	1612	1612	1612
5	1594	1617	1634
10	1561	1612	1636
15	1514	1578	1608
20	1453	1530	1589
25	1384	1471	1552
30	1310	1413	1502
35	1226	1322	1445
40	1121	1237	1328
45	1003	1124	1146
50	876	956	889
55	723	728	698
60	359	422	575
65	46	73	38
70	6	8	8
75	3	5	5
80	2	3	3
85	2	3	4

### MAINTAINED ILLUMINATION TABLE- Square Feet/Fixture\*

- 80-50-20 Reflectances (Ceiling-Wall-Floor)
- LLF = 0.74 2800 Lumens/Lamp very clean
- Room width divided by room height = 5 or more, 2 or 1

Fixture Size & # of Lamps	Room Width Room Height =	Approx. Area (sq. ft.) per Fixture				
		10 ft-c	30 ft-c	50 ft-c	70 ft-c	100 ft-c
2 Lamp	5	-	99	60	43	-
31U6	2	-	72	43	31	-
	1	-	53	32	-	-

\*Observe Fixture S/MH Requirements for Specific Applications

### AVERAGE LUMINANCE CD/SQ.M WITH 2800 LUMEN LAMPS

ANGLE	END	45°	CROSS
45	4986	5587	5696
55	4430	4461	4277
65	383	607	316
75	41	68	68
85	81	121	161

### TYPICAL V.C.P.'s

Room Size	Mounting Height	
	Lengthwise	Crosswise
	8.5	10
30x30	91	84
40x40	94	89
60x30	94	89
60x60	96	93
100x100	97	95

LLF = .74 LLF = LIGHT LOSS FACTOR LLF = LDD X LLD X BF LDD = VERY CLEAN 0.94 CLEAN 0.90  
LLD = 0.90 @ 40% RATED LAMP LIFE BF = .88 ELECTRONIC BALLAST & T8 LAMP (RELAMP AT 70% LAMP LIFE)

### COEFFICIENT OF UTILIZATION

pfc pcc pw RCR	20		70		50	
	70	50	30	70	50	30
0	79	79	79	77	77	73
1	73	70	68	71	69	67
2	68	64	59	67	63	60
3	63	56	53	61	56	55
4	57	52	46	56	51	48
5	54	46	40	53	46	44
6	50	41	36	48	40	35
7	46	38	33	45	38	36
8	42	34	29	41	34	34
9	40	32	27	40	32	30
10	38	29	25	36	28	23

### LIGHT DISTRIBUTION

DEGREES	LUMENS	% LAMP	% FIXTURE
0-30	1278	22.8	34.5
0-40	2111	37.7	56.9
0-60	3582	64.0	96.6
0-90	3707	66.2	100.0

## PHOTOMETRIC DATA

CATALOG # 2LP3GS231U6R-44AL-1/2-EB  
TEST #22792 S/MH= 1.3

LAMPS = FB032T8/6  
BALLAST = ELECTRONIC

INPUT WATTS = 57  
BALLAST FACTOR = .88

LER = FP-55

COMPARATIVE YEARLY LIGHTING ENERGY COST PER 1000 LUMENS = \$4.36 BASED ON 3000 HRS. AND \$.08 PER KWH.

FIXTURE EFFICIENCY= 63.3%

CANDLEPOWER			
Angle	End	45	Cross
0	1569	1569	1569
5	1560	1568	1574
10	1529	1554	1574
15	1479	1523	1544
20	1422	1464	1517
25	1353	1408	1471
30	1279	1338	1412
35	1192	1244	1357
40	1093	1153	1262
45	970	1040	1086
50	832	873	854
55	666	653	677
60	368	398	468
65	84	131	82
70	30	34	37
75	12	15	16
80	6	8	7
85	3	4	3

### MAINTAINED ILLUMINATION TABLE- Square Feet/Fixture\*

- 80-50-20 Reflectances (Ceiling-Wall-Floor)
- LLF = 0.74 2800 Lumens/Lamp very clean
- Room width divided by room height = 5 or more, 2 or 1

Fixture Size & # of Lamps	Room Width Room Height =	Approx. Area (sq. ft.) per Fixture				
		10 ft-c	30 ft-c	50 ft-c	70 ft-c	100 ft-c
2 Lamp	5	-	95	57	41	-
31U6	2	-	68	41	-	-
	1	-	51	30	-	-

\*Observe Fixture S/MH Requirements for Specific Applications

### AVERAGE LUMINANCE CD/SQ.M WITH 2800 LUMEN LAMPS

ANGLE	END	45°	CROSS
45	4821	5169	5398
55	4081	4001	4149
65	699	1089	682
75	163	204	217
85	121	161	121

### TYPICAL V.C.P.'s

Room Size	Mounting Height	
	Lengthwise	Crosswise
	8.5	10
30x30	86	80
40x40	89	85
60x30	90	86
60x60	91	88
100x100	93	91

LLF = .74 LLF = LIGHT LOSS FACTOR LLF = LDD X LLD X BF LDD = VERY CLEAN 0.94 CLEAN 0.90  
LLD = 0.90 @ 40% RATED LAMP LIFE BF = .88 ELECTRONIC BALLAST & T8 LAMP (RELAMP AT 70% LAMP LIFE)

### COEFFICIENT OF UTILIZATION

pfc pcc pw RCR	20		70		50	
	70	50	30	70	50	30
0	75	75	75	73	73	69
1	70	68	66	68	67	64
2	65	60	57	64	59	57
3	59	55	50	58	54	52
4	56	48	44	54	47	44
5	52	44	39	50	44	41
6	47	40	34	46	40	38
7	44	36	30	42	35	34
8	40	33	28	40	33	32
9	39	30	26	38	29	29
10	35	28	23	34	28	23

### LIGHT DISTRIBUTION

DEGREES	LUMENS	% LAMP	% FIXTURE
0-30	1228	21.9	34.6
0-40	2016	36.0	56.9
0-60	3378	60.3	95.3
0-90	3545	63.3	100.0

247.2-PLV

DAY-BRITE LIGHTING • www.daybritelighting.com  
776 South Green Street • Tupelo, Mississippi 38804 • PH: (662) 842-7212 • FAX: (662) 841-5501  
CANADIAN DIVISION  
189 Bullock Drive • Markham, Ontario L3P 1W4 • PH: (905) 294-9570 • FAX: (905) 294-9811

©2002 DAY-BRITE LIGHTING  
DB 08-02-3.5M  
DAY-BRITE RESERVES THE RIGHT TO  
MAKE CHANGES WITHOUT NOTICE.

